



# East Coast Cities

Shopping, sightseeing and much, much more!

New York is the most cosmopolitan city that you'll ever visit! Trendy, vibrant and exciting, this is the city that never sleeps! Home to Times Square, Broadway, Central Park, Empire State Building, Statue of Liberty and Radio City Music Hall.

There's never enough time to see and do everything you want to in this great destination. Fifth Avenue is home to all the designer boutiques and the city's best-known department stores of Macy's and Bloomingdales will satisfy even the most discerning shopper.

Philadelphia is one of America's best kept secrets. It is both the oldest and fifth largest city within the United States and is steeped in American history. Betsy Ross House is where the first American flag was made; Liberty Bell, signifying freedom and Philadelphia's Museum of Art atop the steps made famous in the 'Rocky' movies are just a few of the 'must sees' in this beautiful city.

Named after a famous president, Washington DC is arguably one of the most famous cities in the world. Tour The White House, visit the Washington Monument, stroll along the Potomac River or enjoy a sunset picnic on the steps of the Jefferson Memorial.

Stop by The Smithsonian Institution, the largest museum cluster in the world. Besides the celebrated symbols of patronism, this is a city that also prides itself on casual cafés and bustling bistros that line the trendy streets of Georgetown.

One of the world's greatest cities is Chicago. This sophisticated city of friendliness is located on the south west tip of Lake Michigan. Enjoy the grace, beauty and thrill of a day on Lake Michigan. Navy Pier has it all. This is a location like no other! From rides to restaurants, exhibitions to entertainment, there is something for everyone here. The Magnificent Mile is every shopper's paradise and features some of the finest shops in America.

Rich in history and culture, home to some of the best restaurants, hotels, nightlife and attractions... this is Boston. A mix of colonial charm and subtle sophistication make Boston a very walkable city and extremely easy to get around. Nearly every corner has a historical site and many are linked by The Freedom Trail. Faneuil Hall Marketplace is steeped in history and an excellent location for shops and restaurants. Boston is also the gateway to discovering New England.



## Affinia Gardens

New York – First Class

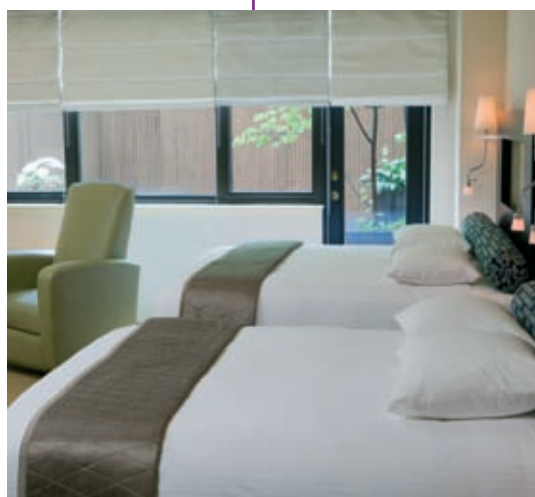
Experience peace and calm among the tree-lined streets of Upper East Side. This all-suite property benefits from a peaceful location, yet sits just five blocks from Fifth Avenue and beautiful Central Park. Studios and suites offer custom-designed bedding, with a choice of six types of pillow, television, mini-bar, wireless internet and Damana bathroom amenities. The Serenity Lounge offers a complimentary tea bar for all guests.

### KEY FACILITIES

- Fitness centre
- Spa services
- Complimentary tea in Serenity Lounge
- Complimentary tranquility amenities
- 24 hour room service
- Non-smoking hotel

### Prices from £99

Per person per night, based on twin occupancy of a junior suite. Other room categories available on request.



## Affinia Manhattan

New York – First Class

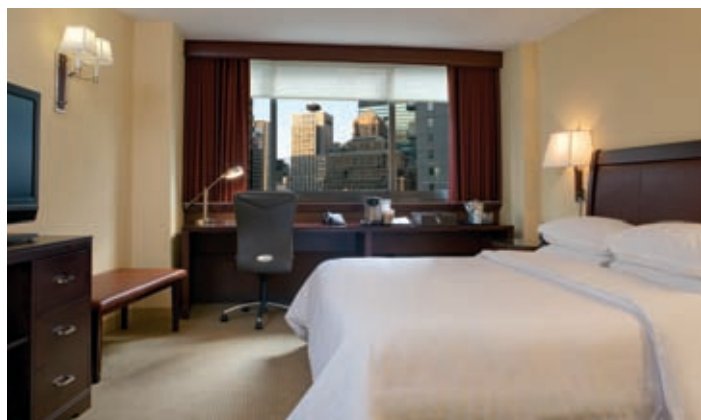
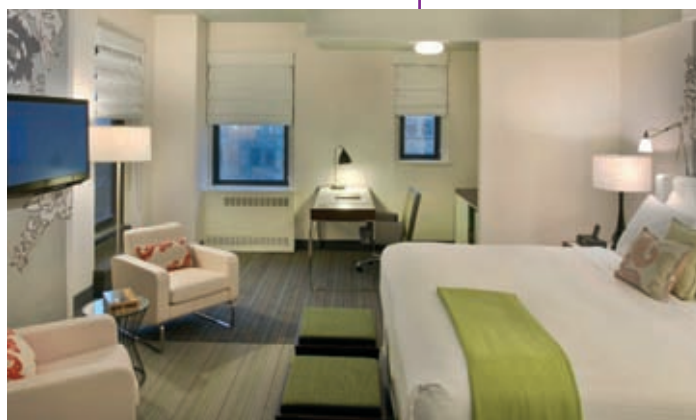
Holding an enviable position, Affinia Manhattan sits in the heart of the Fashion District on Seventh Avenue, facing Madison Square Garden and Penn Station and a few steps from Macy's fabulous shopping. Newly refurbished in a stylish design, the hotel's 618 guestrooms feature flat screen televisions, iPod docking stations, wireless internet, air-conditioning and signature Affinia beds which offer a six-choice pillow menu providing the utmost comfort. The sleek setting of Niles Restaurant provides a contemporary environment to enjoy continental cuisine and an array of cocktails.

### KEY FACILITIES

- Niles Restaurant – continental dining
- Niles Bar – relaxing drinks
- Ticket concierge
- Fitness centre
- In-room spa treatments by SPAffinia

### Prices from £59

Per person per night, based on twin occupancy of a standard room. Other room categories available on request.



## Sheraton New York Hotel & Towers

New York – Superior First Class

Located in midtown Manhattan, the Sheraton has a wonderful position close to great shopping, Central Park, Times Square and many of New York's fabulous attractions. Traditional design accompanied with a contemporary flair echoes through the hotel's restaurant, lounge and through to the 1,750 guestrooms and suites. All are beautifully furnished and offer Sheraton's signature Sweet Sleeper Beds for a wonderful night's sleep.

### KEY FACILITIES

- Hudson Market – American cuisine
- Library bar – formal drinks lounge
- Fitness centre
- Theatre desk

### Prices from £103

Per person per night, based on twin occupancy of a standard room. Other room categories available on request.

## Grand Hyatt New York

New York – Superior First Class

Soaring high above Park Avenue on the Eastside of midtown Manhattan, the Grand Hyatt New York is steps away from Times Square, Broadway theatres, Central Park and Fifth Avenue. Hyatt Grand Beds, flat screen televisions and iPod docking stations provide home comforts in every room, and fabulous bathrooms feature granite vanities, imported stone flooring, marble showers and Portico bathroom amenities. The New York Central Bar and Kitchen, provides a contemporary setting to enjoy delectable Western European dishes.

### KEY FACILITIES

- New York Central – Western European dining
- Market – 24 hour casual dining
- In-room dining
- Stay fit at Hyatt fitness centre
- Theatre, tour and transportation desk

### Prices from £84

Per person per night, based on twin occupancy of a standard room. Other room categories available on request.

## Hotel Roger Williams

New York – First Class

Towering over Madison Avenue, in the fashionable Murray Hill neighbourhood of Manhattan, Hotel Roger Williams is a leisurely stroll from many of New York's incredible landmarks. Offering a unique contemporary style, the 193 guestrooms and suites are vibrant and fresh and offer flat screen televisions, iPod docking stations, Cyprus Resort & Spa bathrobes and Aveda bathroom products. Egyptian cotton linens, down comforters and pillows and colourful quilts grace the beds, promising a wonderful night's sleep.

### KEY FACILITIES

- The Breakfast Pantry
- Rogers Dining Room
- The Roger – cosmopolitan bar
- Fitness centre
- Concierge desk

### Prices from £99

Per person per night based on twin occupancy of a superior room. Other room categories available on request.



## Hilton New York

New York – Superior First Class

The Hilton New York offers a perfect location for a short break, sitting alongside Rockefeller Centre, just one block from Fifth Avenue's shopping and a short walk from the Broadway's theatres. Spacious guestrooms offer stylish, modern décor, are climate controlled and feature marble bathrooms, coffee-makers and large windows to make the most of the city and skyline views. When it comes to dining, the Hilton New York has a great choice of restaurants from authentic Tuscan cuisine at Etrusca to the casual atmosphere of the New York Marketplace.

### KEY FACILITIES

- Etrusca – Mediterranean menus
- New York Marketplace – casual dining
- Lobby lounge
- Starbucks café
- Bridges Bar
- Theatre and concierge desk
- Fitness centre

### Prices from £95

Per person per night based on twin occupancy of a standard room. Other room categories available on request.



## The Benjamin

New York – Superior First Class

Restored to its original splendour, this classic 1927 building sits on Lexington & East 50th Street in the heart of Manhattan, close to Rockefeller Centre and Grand Central Station. The boutique-style Benjamin offers a choice of guestrooms, spacious studios and one bedroom suites. Classic and elegant in design, accommodations are furnished in a light taupe palette with mahogany furnishings and feature 32" plasma televisions, iPod docking stations, 500-thread Egyptian cotton bedding and a choice of 12 types of pillow! Suites also boast a separate living room and kitchenette.

### KEY FACILITIES

- The National – modern bistro cuisine
- The Wellness Spa at The Benjamin
- Guest services and concierge
- 24-hour room service

### Prices from £91

Per person per night based on twin occupancy of a standard room. Other room categories available on request.

## Soho Grand Hotel

New York – Superior First Class

Located in the stylish SoHo neighbourhood of Manhattan, Soho Grand sits in close proximity to TriBeCa, the Meatpacking District and Greenwich Village. 353 guestrooms, suites and penthouse loft suites, are wonderfully furnished so you feel right at home. Created to portray the eclectic cool of hip downtown whilst maintaining a calm space to escape the crowds, guestrooms are fitted with the latest technology: offering flat screen televisions, Sony Dream Machine Speaker Docks, DVD players and wireless high-speed internet access.

### KEY FACILITIES

- The Grand Bar & Lounge
- Club Room – intimate dining
- The Yard – terrace dining (seasonal)
- Fitness centre
- Pet goldfish upon request

### Prices from £95

Per person per night based on twin occupancy of a superior room. Other room categories available on request.

## Sheraton Society Hill

Philadelphia – Superior First Class

The Sheraton is located amidst cobblestone streets in America's most historic square mile. The property is decorated in warm colonial American style and each of the 365 guestrooms is air-conditioned and features a coffee-maker and a small seating area. At the end of a busy day, guests can unwind at the indoor heated pool, whirlpool, sauna or fitness centre. Taste offers contemporary American cuisine, and many more restaurants are located close by.

### KEY FACILITIES

- Taste – American dining
- Indoor heated pool
- Sauna and fitness centre
- Indoor whirlpool
- Indoor children's pool
- Gift shop

### Prices from £47

Per person per night, based on twin occupancy of a standard room. Other room categories available on request.



## Hyatt Regency Philadelphia at Penn's Landing

Philadelphia – Superior First Class

Situated on Philadelphia's revitalised Delaware Waterfront on the eastern edge of downtown, close to Dock Street shopping and restaurants. This elegant hotel has a warm, inviting lobby of rich textured fabrics and marble flooring. Guestrooms benefit from a view of either the city or marina and offer home comforts in spacious surroundings. The Hyatt features a fitness centre, indoor pool, sundeck and sauna.

### KEY FACILITIES

- Keating's River Grill
- Keating's Bar
- Indoor pool
- Outdoor sun terrace
- Health club
- Perk's Café

### Prices from £70

Per person per night, based on twin occupancy of a standard room. Other room categories available on request.

## The Rittenhouse Hotel

Philadelphia – Superior Deluxe

The Rittenhouse is located on the prestigious Rittenhouse Square and is regarded as one of the best hotels in Philadelphia. A boutique property of just 98 guestrooms ensures you receive personal service. Newly refurbished, each room features plush linens, iPod docking stations, flat screen television, a sitting area and a marble bathroom with walk-in shower, bathrobes and slippers. Indulge in some French American cuisine at the award-winning Lacroix at The Rittenhouse.

### KEY FACILITIES

- Indoor heated pool
- Adolf Blecker Spa & Salon
- Lacroix at The Rittenhouse
- Mary Cassatt Tea Room & Garden
- Boathouse Row Bar
- Smith & Wollensky Grill

### Prices from £107

Per person per night, based on twin occupancy of a standard room. Other room categories available on request.

## The Melrose Hotel

Washington DC – First Class

The Melrose Hotel is ideally positioned, just one block from Georgetown and within easy reach of the city's landmarks, museums and places of interest, including one of America's most famous sites, the White House. Offering a boutique style, guestrooms are spacious and well-appointed, featuring deluxe pillow-topped mattresses, fine bed linens, coffee-makers, refrigerators and marble bathrooms. Enjoy breakfast, lunch and dinner at the Landmark Restaurant, where stately décor evokes the traditional character of this wonderfully historic city.

### KEY FACILITIES

- Landmark Restaurant – contemporary American cuisine
- Library Bar
- 24-hour room service
- Fitness centre

### Prices from £52

Per person per night, based on twin occupancy of a deluxe king room. Other room categories available on request.



## Washington Marriott Wardman Park

Washington DC – First Class

The Marriott Wardman Park sits amidst 16 acres of woodland at Woodley Park. The Metro Station close by provides convenient access to Washington's great attractions. Highlighted by a sky-lit chrome and glass atrium, it has a contemporary style throughout its 1,441 guestrooms and suites, which are climate controlled and feature coffee-makers and mini-bars. Guests can enjoy hearty meals at Stone's Throw Restaurant and Bar, casual drinks at the lobby bar, a workout at the fitness centre or simply relax by the outdoor pool (seasonal).

### KEY FACILITIES

- Stone's Throw Restaurant and Bar
- Lobby bar for cocktails and wines
- Illy café
- Woodley Market
- Outdoor pool and sundeck
- Fitness centre
- Harry's Pub
- Concierge service

### Prices from £79

Per person per night, based on twin occupancy of a standard room. Other room categories available on request.



## Donovan House

Washington DC – Superior First Class

Sitting in the heart of historical downtown Washington DC, Donovan House is a great choice for those wanting a chic hotel close to many attractions. This boutique hotel of just 193 rooms is stylishly decorated, combining clean whites with dark woods and a splash of deep red and purple. Marble bathrooms offer cocoon spiral showers, Frette bathrobes and C.O. Bigelow bathroom products, and, in the bedroom, Sierra 400-thread count linens, flat screen televisions, Dean & DeLuca mini-bars and iPod docking stations enhance any stay.

### KEY FACILITIES

- Zentan – Asian inspired cuisine
- Heated rooftop pool and sundeck
- Above DC – rooftop bar
- Fitness centre

### Prices from £53

Per person per night, based on twin occupancy of a standard room. Other room categories available on request.



## The Fairmont Washington DC

Washington DC – Deluxe

Proudly sitting in Washington's fashionable West End district, adjacent to historic Georgetown, is the city's elegant Fairmont property. Offering a choice of 415 guestrooms and suites with cable television, bathrobes, CD alarm clock, mini-bar and temperature control. Satisfying even the most discerning taste buds, Juniper serves Mid-Atlantic fare whilst The Colonnade serves a legendary Sunday brunch, one not to be missed. Workout fanatics will enjoy training at the newly renovated health club or an energetic swim at the indoor pool.

### KEY FACILITIES

- Juniper Restaurant
- The Colonnade
- The Loggia
- Room service
- Health club and massage treatments
- Indoor pool
- Jacuzzi, steam room and sauna

### Prices from £75

Per person per night, based on twin occupancy of a fairmont room. Other room categories available on request.

## The Avenue Crowne Plaza

Chicago – First Class

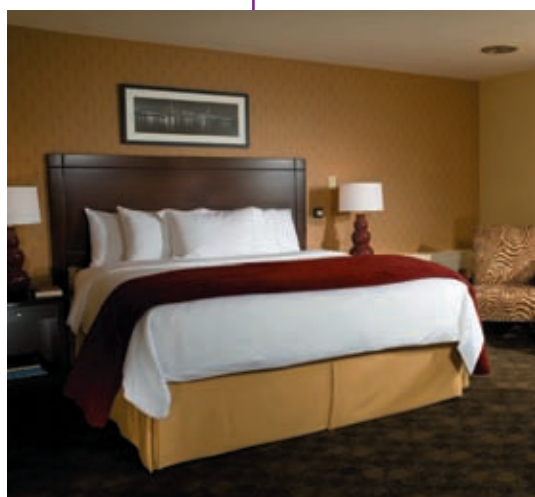
Ideally positioned on Michigan Avenue, also fondly known as the Magnificent Mile because of its mile-long stretch of shops and boutiques, The Avenue Crowne Plaza offers a contemporary boutique-style experience. Whether choosing one of the 200 newly designed guestrooms or 150 suites your room has a high-definition flat screen television, iHome docking station and the signature zebra print chair. There's also a selection of family-themed guestrooms, designed with children's fun activities in mind.

### KEY FACILITIES

- Sky Lounge
- Elephant & Castle pub
- Fitness centre
- Rooftop pool (seasonal)
- In-room dining
- Family-themed rooms

### Prices from £52

Per person per night, based on twin occupancy of a new king room. Other room categories available on request.



## Palmer House Hilton

Chicago – Moderate Deluxe

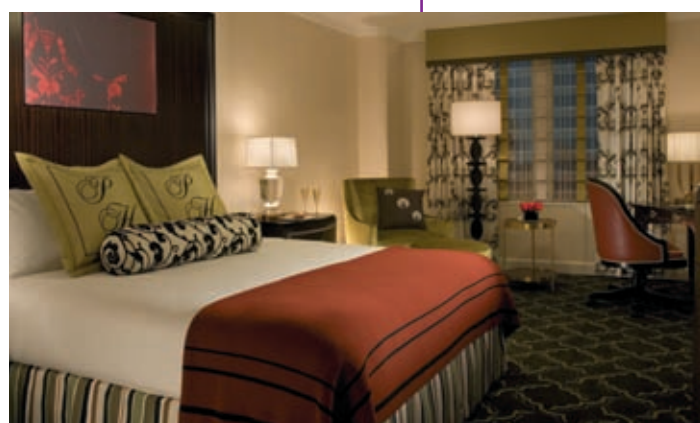
The Palmer House Hilton can be found on The Loop, in the heart of this tremendous city; just minutes from the hotel are shopping, art and theatre. Culinary magic is made at the upscale Lockwood Restaurant and Bar, or for a classic cocktail or light bite try Potter's Lounge. Modern in décor, guestrooms offer the new Serenity Dream Bed with European linens, iPod docking station and CD player. An indoor pool and fitness centre complete the great facilities offered at this wonderful 'Windy City' hotel.

### KEY FACILITIES

- Lockwood Restaurant & Bar
- Potter's Lounge
- Fitness centre
- Indoor pool
- Gift shop and news stand

### Prices from £46

Per person per night, based on twin occupancy of a standard room. Other room categories available on request.



## Hilton Chicago

Chicago – Superior First Class

A historic hotel, Hilton Chicago is located on Michigan Avenue, overlooking Grant Park and Lake Michigan and only minutes from great shopping and city theatres. Guestrooms boast Serenity Beds, with pillow top mattress, fine European linens and feather pillows, flat screen televisions, iPod docking stations and wireless internet access. Dining is a pleasure whether choosing the casual international restaurant or the fun Irish Pub, each unique in both cuisine and atmosphere.

### KEY FACILITIES

- Kitty O'Sheas Irish pub
- Lakeside Green Lounge
- The Pavillion
- Fitness centre
- Indoor pool
- Jogging and walking tracks
- Gift shop and tour desk

### Prices from £46

Per person per night, based on twin occupancy of a standard room. Other room categories available on request.

## Fairmont Chicago, Millennium Park

Chicago – Moderate Deluxe

This luxurious hotel is renowned for its picturesque lakefront setting and personalised service. Step outside and many of Chicago's highlights, including the Magnificent Mile and Navy Pier are close by. Exceptionally spacious and well-equipped, the hotel comprises 687 guestrooms and suites, all offering a 42" flat screen television, iPod docking station and a marble bathroom. Aria Restaurant adds a unique spin to American dining whilst Aria Bar serves wicked cocktails and sushi, and ENO's is a haven for wine, chocolate and cheese lovers.

### KEY FACILITIES

- aria restaurant – new world Asian cuisine
- aria bar & sushi
- ENO – wine, cheese and chocolate
- In-room dining
- mySpa – massages and treatments
- Fitness centre

### KEY BONUS

- 10% discount on a second room, 1st April 2012 to 31st March 2013.
- 4th night free & complimentary breakfast for two, 21st December 2012 to 31st March 2013.

### Prices from £79

Per person per night, based on twin occupancy of a Fairmont room. Other room categories available on request.

## Sheraton Boston Hotel

Boston – First Class

Nestled in the charming Back Bay area of Boston, the Sheraton is connected to almost 200 shops at the Copley Place Mall. Each guestroom boasts the Sheraton Sweet Sleeper bed, a 27" television, coffee-maker and hairdryer. Guests choosing Club Floor accommodation enjoy access to the Club Lounge, which not only features food and beverage presentations throughout the day and private concierge but also boasts spectacular unobstructed views of the river. SideBar & Grille is an ideal spot to enjoy a light meal or a relaxing drink overlooking Back Bay.

### KEY FACILITIES

- SideBar & Grille
- Café Apropos
- Starbucks café
- Indoor pool with retractable roof
- Sauna and Jacuzzi
- Fitness centre

### KEY BONUS

- 4th night free, 1st January to 31st March 2012.
- Early booking offer, book by 1st April 2012 for stays 15th July to 9th September 2012 and enjoy reduced prices.

### Prices from £49

Per person per night, based on twin occupancy of a standard room. Other room categories available on request.



## Nine Zero

Boston – Moderate Deluxe

Holding an enviable position, Nine Zero is just steps away from Boston Common, Quincy Market, and an abundance of shopping and restaurants. The combination of traditional redbrick and limestone with sleek nickel, chrome and glass gives this property a uniquely modern feel, in great contrast to the historic city which surrounds it. Plush furnishings and fabrics are standard throughout the 190 guestrooms and suites, where 27" televisions, iHome docking stations, mini-bars and bathrobes ensure the room amenities match the hotel's first class reputation.

### KEY FACILITIES

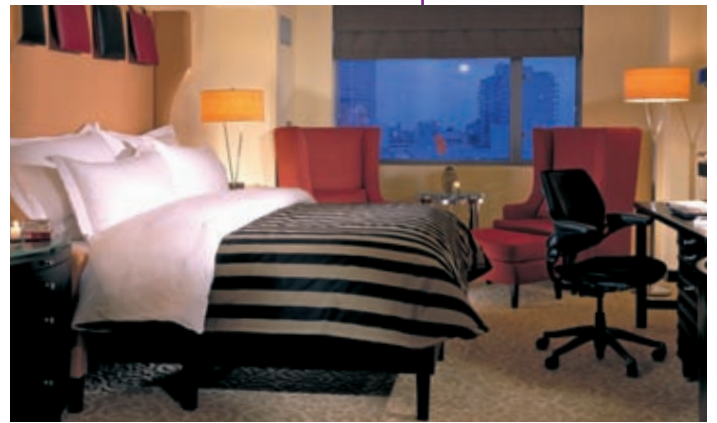
- KO Prime – modern steakhouse
- 24-hour room service
- In-room spa services
- Fitness centre

### KEY BONUS

- Complimentary continental breakfast for two, 1st April 2012 to 31st March 2013.
- Discounted prices 29th June to 3rd September 2012 when booked by 1st April 2012 and 1st October to 16th November 2012 when booked by 1st October 2012.

### Prices from £63

Per person per night, based on twin occupancy of a standard room. Other room categories available on request.



## Boston Marriott Copley Place

Boston – Superior First Class

Occupying a wonderful position in the heart of downtown Boston, connected to a myriad of shopping at Copley Place Mall and a short stroll from both Boston Common and Beacon Hill. Each of the 1,098 guestrooms has been upgraded to provide all the comforts of home. Revive Beds offer fine linens, custom duvets and fluffy pillows for the utmost in comfort and all rooms are air-conditioned and feature a 37" television and coffee-maker. Relax at the end of a busy day at the large indoor pool, which features a hot tub and fully-equipped fitness centre.

### KEY FACILITIES

- Champions American Sports Bar
- Starbucks café
- Indoor pool
- Fitness centre
- Connected to shopping mall

### Prices from £49

Per person per night, based on twin occupancy of a standard room. Other room categories available on request.

## Boston Harbor Hotel

Boston – Deluxe

In a picture-perfect location on Rowes Wharf, the Boston Harbor Hotel overlooks historic Boston Harbor and allows for easy access to Boston's most famous landmarks and attractions. The 230 guestrooms and suites are well-appointed, boasting flat screen televisions, CD players, wireless internet and marble bathrooms and feature spectacular city or harbor views. Enjoy fresh, seasonal cuisine paired with outstanding wines from around the world at Meritage, and sample innovative seafood dishes in the hotel's oceanfront restaurant.

### KEY FACILITIES

- Meritage – regional cuisine
- Rowe Wharf Sea Grille – seafood
- The Spa at Rowes Wharf
- Fitness centre
- 24-hour room service
- The Rowes Wharf Water Taxi
- Chauffeur service

### Prices from £87

Per person per night, based on twin occupancy of a city view superior king room. Other room categories available on request.



Massachusetts

Boston, the gateway to New England, is a fabulous city, compact enough to explore on foot. It boasts great shopping, award-winning dining and a host of attractions – many of historic importance. Massachusetts is also home to Cape Cod which loops out into the Atlantic Ocean, renowned for its sandy beaches, quaint fishing towns and intimate inns. For a rural Massachusetts' experience, the Berkshire Hills in the west of the state are ideal.



Cape Codder Resort & Spa

Hyannis – Cape Cod, Massachusetts

Prices from £40

Per person per night, based on twin occupancy of a standard room. Other room categories available on request.

The Cape Codder's Hyannis location provides a perfect position to explore the Cape Cod area and its adjacent islands. Newly renovated, it is perfect for families, with a wave theme pool complete with waterslides, tennis and a playground plus saunas, fitness centre and Beach Plum Spa for the adults. Two restaurants, Hearth 'n Kettle and Grand Cru Grill, offer creative and hearty American dining. There's a choice of rooms, suites or two and three bedroom units.



Deerfield Inn

Deerfield, Massachusetts

Prices from £69

Per person per night, based on twin occupancy of a standard room. Continental breakfast incl. Other room categories available on request.

Built in 1884, this traditional country inn is situated in the heart of Deerfield and features just 24 guestrooms. Quaint and charming décor grace all rooms, maintaining the historic feel of the town. Main features in the rooms are private bath and shower, flat screen DVD television and organic toiletries. The restaurant offers a fine culinary experience which changes with the seasons, whilst the tavern, serving great malts and microbrewery beers, is a perfect location to relax.



Belfry Inn and Bistro

Sandwich – Cape Cod, Massachusetts

Prices from £59

Per person per night, based on twin occupancy of a standard room. Other room categories available on request.

Set like a jewel in the heart of Sandwich Village, The Belfry Inn beams its warming welcome. The Inn comprises a church and its former manse. Sumptuous décor, imaginative architectural interiors and outstanding service have established the Inn as a landmark of Cape Cod hospitality. The Belfry's intimate atmospheric restaurant, The Bistro, proffers fine food from haute cuisine to casual repasts from menus that represent New England cuisine at its best.



Chatham Wayside Inn

Chatham – Cape Cod, Massachusetts

Prices from £61

Per person per night, based on twin occupancy of a standard room. Other room categories available on request.

Within the heart of the picturesque village of Chatham you will find the Chatham Wayside Inn. This warm and friendly property offers stylish décor throughout its 56 guestrooms. Each of the rooms have en suite bathroom, televisions, hairdryers and irons and some rooms feature porches or patios offering great views of the park adjacent. A fine selection of wines and beers together with maritime cuisine can be found at the Wild Goose Tavern.



Williams Inn

Williamstown, Massachusetts

Prices from £65

Per person per night, based on twin occupancy of a standard room. Other room categories available on request.

Williams Inn is located on the campus of Williams College near the centre of Williamstown. Often called 'The Village Beautiful', Williamstown is set amidst the rolling beauty of the Berkshire Mountains. The Dining Room offers a diverse selection of delicious meals in a relaxed but elegant setting. The 125 guestrooms are decorated in a colonial-style and have en suite bathrooms. The inn features an indoor swimming pool, hot tub and saunas.



## New Hampshire

Only in New Hampshire can you start your day shopping by the beach and end it with a romantic dinner looking out at the highest peak in the Northeast. This beautiful state is blanketed by magnificent lush forest, however, undoubtedly its biggest draw is the awesome White Mountains region which covers a third of the state and is home to the magnificent Mount Washington. The lakes region is equally as inspiring with a total of 273 lakes, the 'queen' of which is Lake Winnepesaukee. Each offers the opportunity for year round activities to satisfy every traveller, from fishing and boating in the summer to skating and sledding in the winter.



### Omni Bretton Arms Inn

Bretton Woods, New Hampshire

Prices from £59

Per person per night, based on twin occupancy of a standard room. Other room categories available on request.

The Omni Bretton Arms Inn is located just a short walk from the grand Omni Mount Washington Hotel in the beautiful White Mountains of New Hampshire. The inn has just 34 spacious guestrooms and suites, all of which are elegantly decorated. Breakfast and dinner are graciously served in the Dining Room and you can enjoy a relaxing afternoon in the adjacent Parlour Lounge. Enjoy a game of tennis or take a carriage ride and soak up the splendid scenery that surrounds you in this wonderful setting.

### The Inn at Mill Falls

Meredith, New Hampshire

Prices from £38

Per person per night, based on twin occupancy of a standard room. Other room categories available on request.

We have selected The Inn at Mill Falls from this quaint New England village of four charming inns for you to enjoy. The inn combines old world charm of crackling fireplaces and cosy nooks with modern day comforts in beautifully decorated spacious guestrooms. Relax by the indoor pool or wander across the pretty glass-enclosed covered bridge to the Mill Falls Marketplace and the shops, galleries and restaurants. The sister properties are the Inn at Bay Point, The Chase House at Mill Falls and Church Landing at Mill Falls.



### Merrill Farm Resort

North Conway, New Hampshire

Prices from £36

Per person per night, based on twin occupancy of a standard room. Other room categories available on request.

Nestled within the White Mountains and offering stunning views, this quintessential inn is perfect for a 'home from home' stay. All rooms have their own character and style, in keeping with the rustic charms of New England and come complete with all standard amenities. Enjoy a sumptuous continental breakfast or afternoon tea in the quaint dining area. A range of outdoor activities are available throughout all seasons – from hiking, fishing and canoeing to snowmobile trails and indoor and outdoor ice skating. The inn also has a large outdoor pool.

Maine

The largest of the New England states, Maine covers more than 33,000 square miles. Its great rugged coastline, dotted with some 2,000 islands, is just waiting to be explored. A wonderland for lovers of the great outdoors, this is a state of sprawling open spaces such as Acadia National Park and the North Woods, as well as over 6,000 lakes and rivers playing host to countless recreational activities.

Maine's extensive coastline provides a myriad of seafood delicacies which must be sampled during any stay. Wander through small fishing villages and quaint boutique towns and you'll experience the true romance of this amazing state.



Atlantic Oceanside

Bar Harbor, Maine

Prices from £43

Per person per night, based on twin occupancy of a standard room. Other room categories available on request.

Atlantic Oceanside is located on Frenchman's Bay and is set on 12 acres of lush lawns and gardens. There are eight distinctive guestroom buildings, however The Willows is the main summer estate built in 1913. Guestrooms are spacious and feature comfortable contemporary furniture with modern amenities. You will never be at a loss for things to do in the Bar Harbor area. Fine dining, the arts, outdoor recreation and much more are located only minutes from the hotel.

Kennebunkport Inn

Kennebunkport, Maine

Prices from £47

Per person per night, based on twin occupancy of a riverhouse room. Other room categories available on request.

This quaint, charming intimate inn is located in the heart of Dock Square, amongst shops, restaurants and attractions and within a community full of history. All 49 rooms are unique and individual, from the elegant style of the Federal and Mansion buildings to beach cottage style at the Wharfside. The new One Dock restaurant serves classic New England cuisine which includes local, fresh seafood. Sample the extensive wine and beers menu while relaxing on the porch to the sound of the soothing piano music. There is also an outdoor pool and the option of spa services.



Harraseeket Inn

Freeport, Maine

Prices from £60

Per person per night, based on twin occupancy of a standard room. Other room categories available on request.

This Inn only has 84 rooms, each one stylish and elegant and in keeping with the Maine lifestyle. Some rooms feature a fireplace or Jacuzzi. Two award-winning restaurants, The Maine Dining Room for casual yet sophisticated cuisine and Broad Arrow Tavern, where you can also enjoy a quiet drink at the end of a busy day sightseeing. Both are situated against a stunning backdrop of glorious grounds and gardens. Just steps away from the property is the Freeport factory outlet shopping area as well as the beautiful lakes and mountains of this scenic state.

## Vermont

Dominated by the majestic Green Mountains which stretch from north to south like a giant backbone to the state, Vermont has a wealth of leisure activities including hiking, cycling and rock climbing and of course, skiing with a host of world-class ski resorts. Its rich heritage and picture-postcard scenery have long attracted artists, writers and craftsmen, inexplicably drawn by its charm.



### Stowflake Mountain Resort & Spa

Stowe, Vermont

Prices from £75

Per person per night, based on twin occupancy of a luxury room. Other room categories available on request.

Situated in spectacular scenery with an amazing backdrop of Mount Mansfield. All rooms are beautifully decorated and most have breathtaking views of the surrounding Vermont countryside. Dining is second to none at Winfield's Bistro with a culinary fusion of flavours to satisfy any palate. A more casual ambience can be found at Charlie B's Pub & Restaurant. Take a treatment at the Spa or enjoy many other activities that are available at this property all year round.



### Woodstock Inn & Resort

Woodstock, Vermont

Prices from £69

Per person per night, based on twin occupancy of a standard room. Other room categories available on request.

An elegant and comfortable country inn, Woodstock Inn offers excellent accommodation, dining and amenities. Guestrooms can be found in the Main Inn or the Tavern Wing and feature a traditional New England style with handmade quilts and some also have fireplaces. Enjoy sophisticated service in the Dining Room or the new Red Rooster Restaurant or a more casual atmosphere in Richardson's Tavern.



### Golden Eagle Resort

Stowe, Vermont

Prices from £39

Per person per night, based on twin occupancy of a standard room. Other room categories available on request.

Half a mile from historic Stowe Village you will find the Golden Eagle Resort. All rooms are tastefully decorated and furnished and feature great amenities including refrigerator and coffee-maker. Deluxe rooms also have a private deck or patio. Start your day at the Colonial Café; where locally sourced ingredients create hearty Vermont breakfasts. Relax in the indoor pool, sauna or fitness centre or take a therapeutic spa treatment to revitalise yourself!



### Inn at Manchester

Manchester, Vermont

Prices from £86

Per person per night, based on twin occupancy of a standard room. Other room categories available on request.

A mixture of casual elegance and charm makes the Inn at Manchester a perfect Vermont getaway. Originally built as a private home in the 1880s, for the last 30 years, it has been a delightful inn that is now listed on the National Register of Historic Places. Cosy and inviting décor make up 18 guestrooms and suites. Some rooms include fireplaces and televisions. Enjoy sumptuous country breakfasts and delightful afternoon teas overlooking the gardens.



### Basin Harbor Club

Lake Champlain, Vermont

Prices from £38

Per person per night, based on twin occupancy of a standard room. Breakfast included. Other room categories available on request.

Located on the shores of Lake Champlain this property is perfect for a relaxing break. All rooms are individual in terms of layout, style and décor but all feature the distinct inspiration of the natural beauty of Vermont. Excellent dining, from elegant dinners to casual picnic lunches, is readily available. There is an on-site 18-hole golf course as well as a children's programme 'Basin Harbor Kids'.



## Rhode Island & Connecticut

Only 48 miles long and 37 miles wide, yet Rhode Island still manages to envelop immense variety. Historically an important maritime centre, it still maintains its proud seafaring traditions and is a world-famous yachting destination. Newport is famed for its gourmet waterfront restaurants as well as its palatial mansions of a bygone era which are still evident today.

Gazing across Connecticut's stunning coastline, you'd be forgiven for not believing that New York City is just 70 miles away. A state of contradictions – sophisticated restaurants and designer shopping; endless state parks and rugged coastal villages. The ever popular Mystic Seaport is a terrific town with a 19th century whaling atmosphere.



### Westin Providence

Providence, Rhode Island

Prices from £71

Per person per night, based on twin occupancy of a traditional room. Other room categories available on request.

Located in downtown Providence and connected to Providence Place Mall, the Westin is centred around a glass-domed rotunda and opulent spiral lobby. Staleness echoes through the guestrooms and public areas, reflecting its rich heritage. With its heated indoor pool, fully-equipped fitness centre and the acclaimed Centro Restaurant, guests could be forgiven for not wanting to leave. All guestrooms have Westin's signature Heavenly Beds, promising the perfect night's sleep and Heavenly Shower stocked with great bathroom products.

### Hotel Viking

Newport, Rhode Island

Prices from £44

Per person per night, based on twin occupancy of a standard room. Other room categories available on request.

The Hotel Viking is located in the heart of Newport's Historic Hill district and is an elegant haven amid the graceful mansions of Bellevue Avenue. This dramatic hotel recently celebrated its 75th anniversary with the completion of an extensive restoration although it has maintained its New England warmth and charm. Each of the 209 guestrooms and suites have been beautifully restored with classic Queen Anne and Chippendale-style furnishings, complemented by modern amenities such as television, climate control and sumptuous bedding. One Bellevue, the award-winning restaurant is renowned as one of Newport's best fine-dining and seafood establishments.



### Litchfield Inn

Litchfield, Connecticut

Prices from £87

Per person per night, based on twin occupancy of a standard room. Other room categories available on request.

For the last 29 years, Litchfield Inn, Connecticut has been an authentic colonial inn. A gleaming nine foot chandelier has pride of place as you enter this truly elegant inn and experience its spectacular warm welcome. The inn has 32 guestrooms, all featuring private bathroom, cable television and air-conditioning. Four glorious fireplaces offer the perfect setting for a drink before dinner or a nightcap after an exciting day exploring. The Litchfield Inn Restaurant & Tavern serves sumptuous meals.